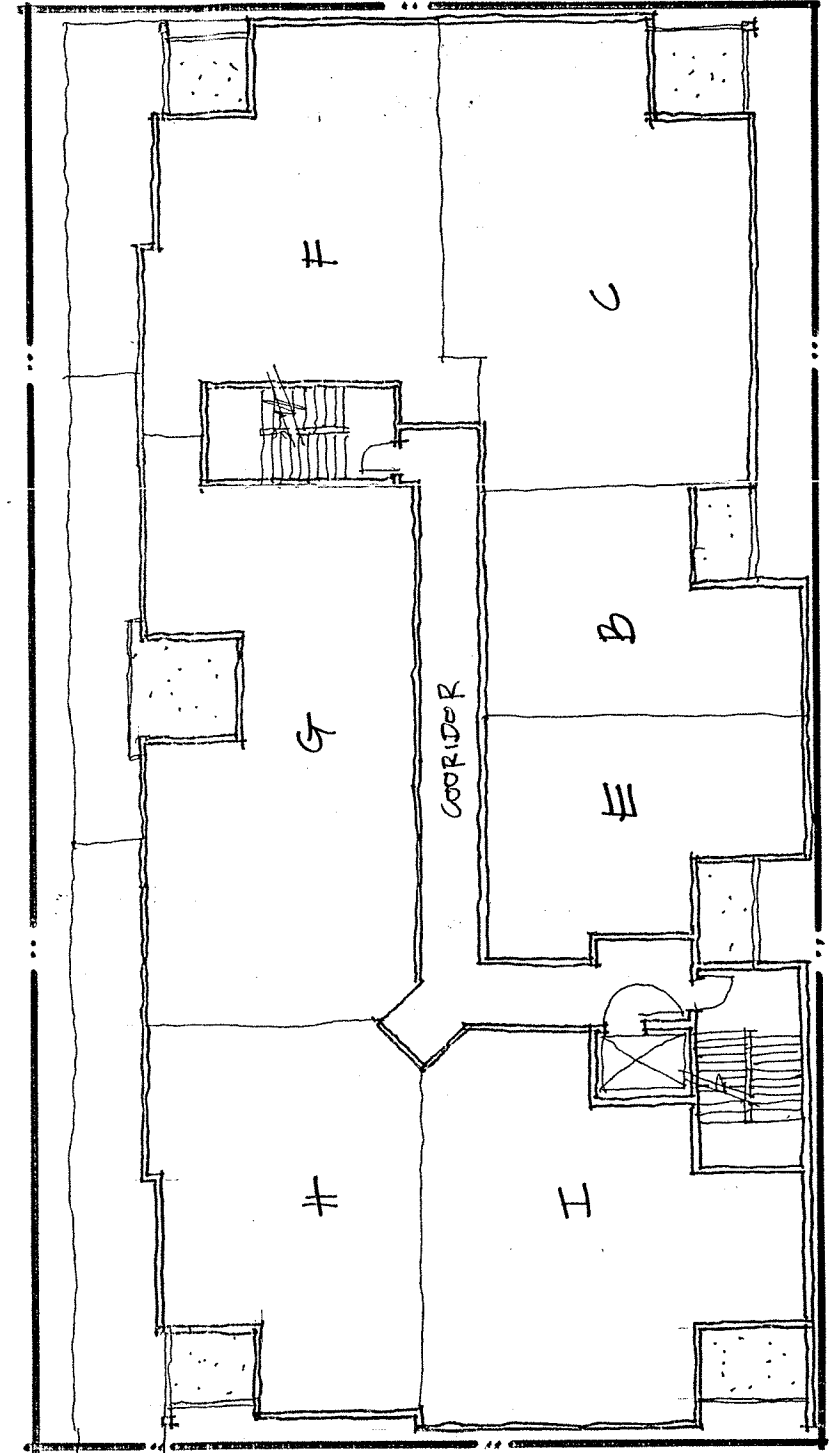
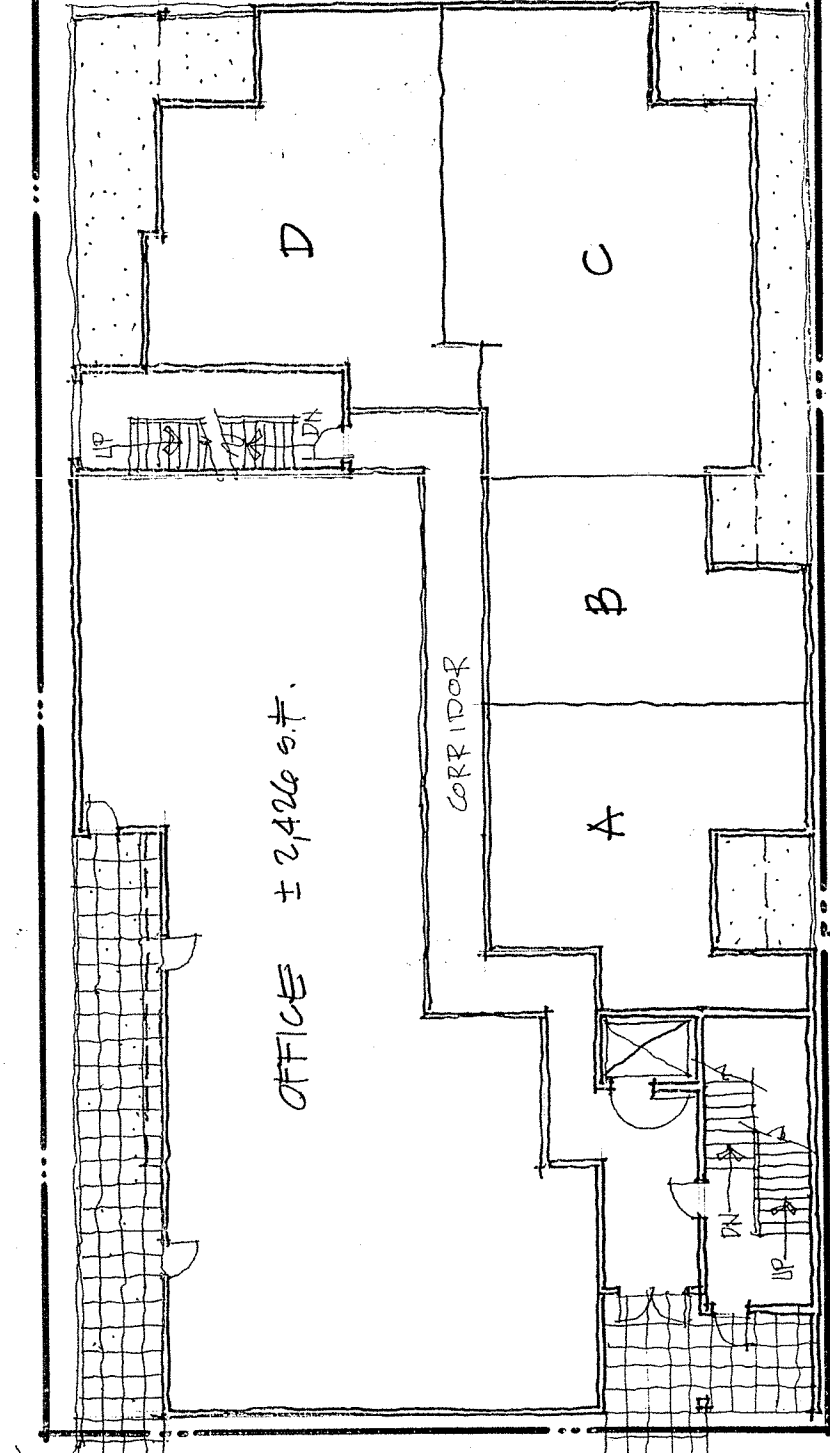


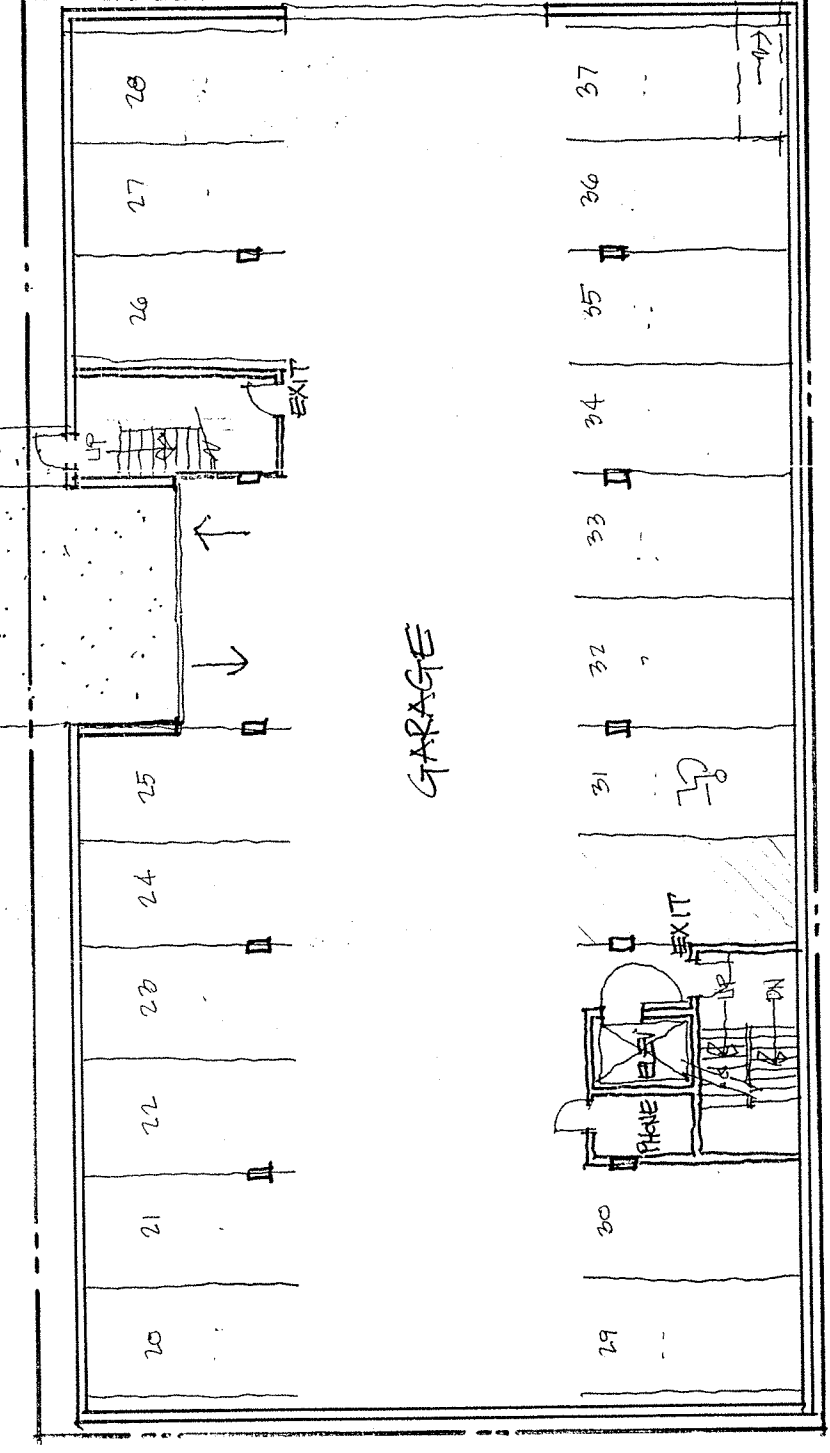
6th Floor



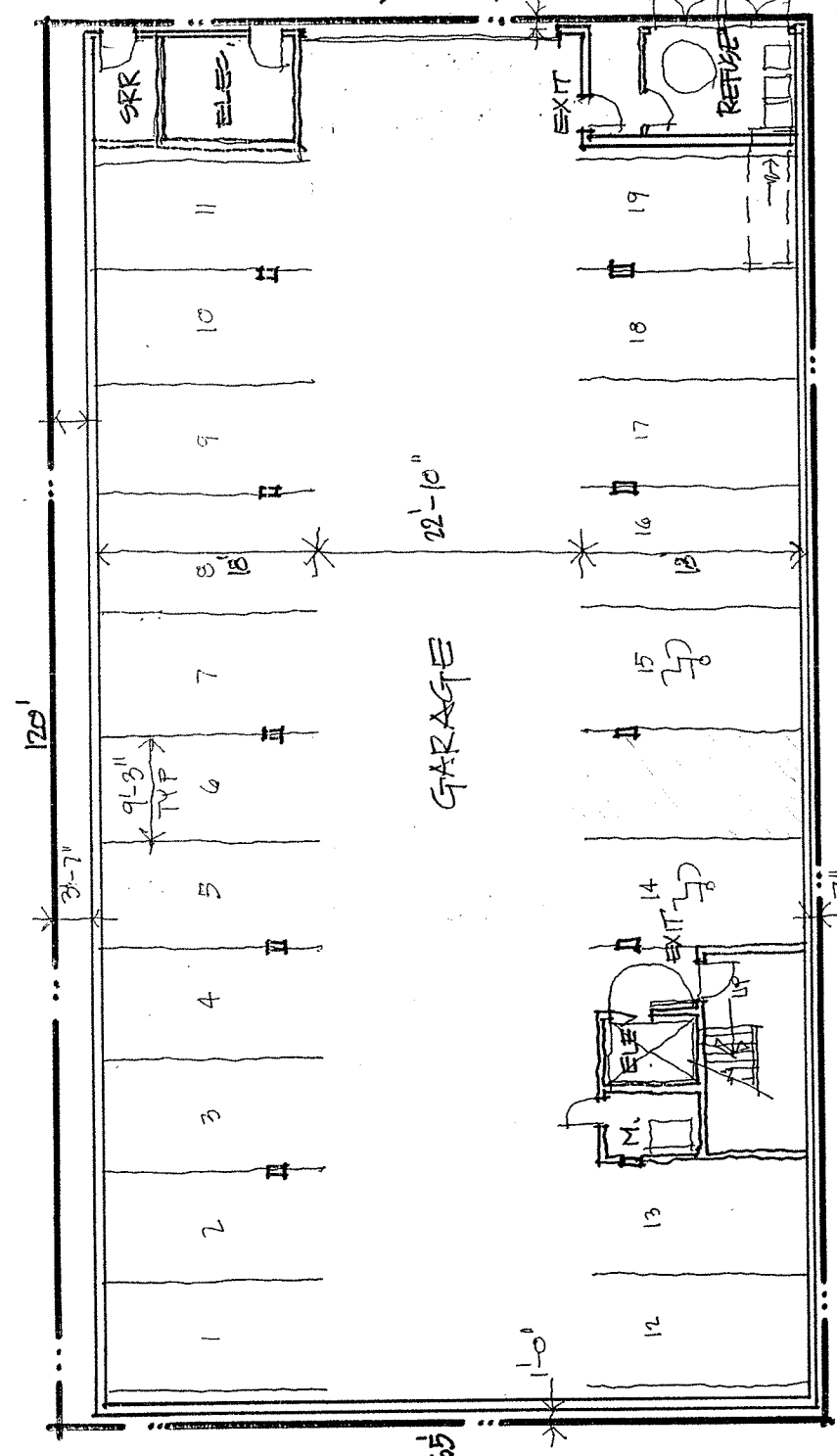
3rd - 5th Floor



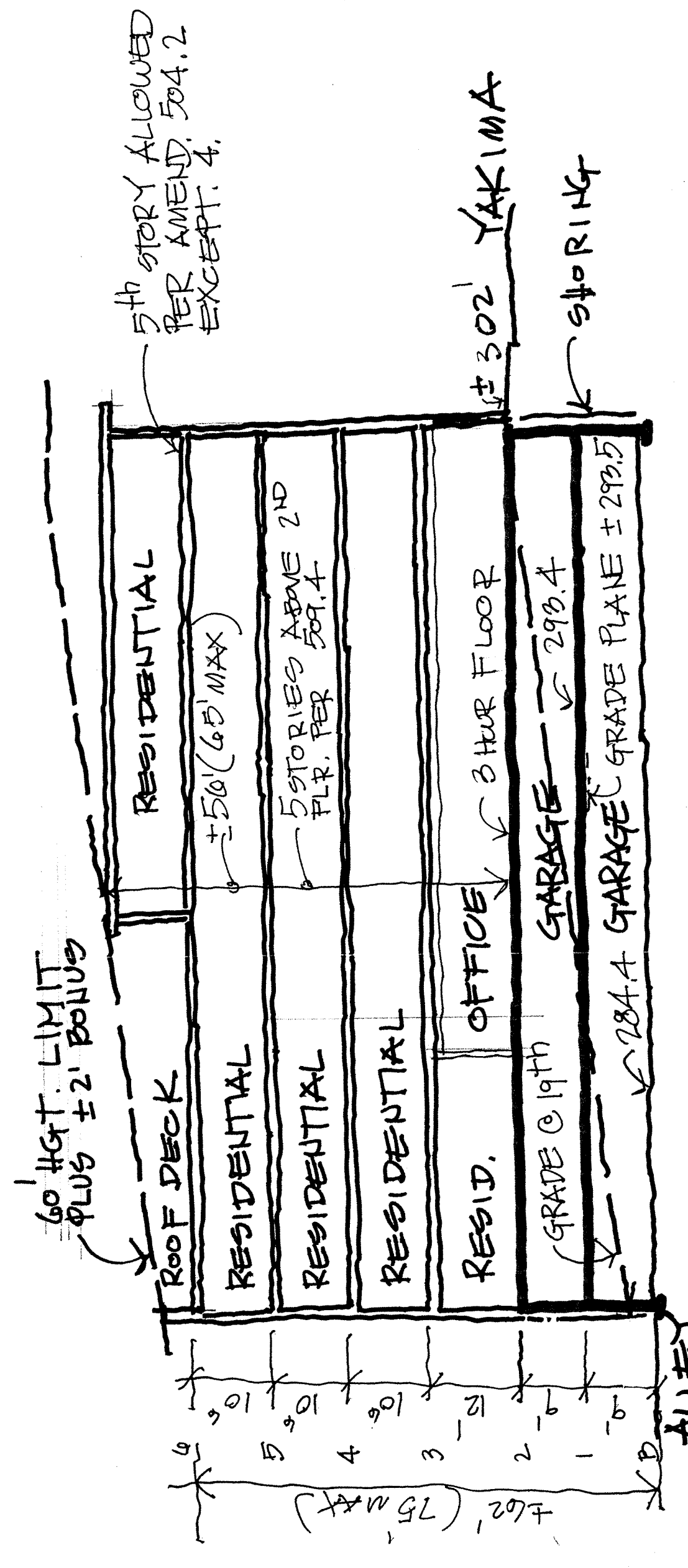
2nd Floor



1st Floor



Basement



Building Section

Statistics

Address: 712-716 South 19th St.  
 Parcel No: 2019150010  
 Zoning: Downtown Residential  
 Parcel Size: 7,800 S.Ft.

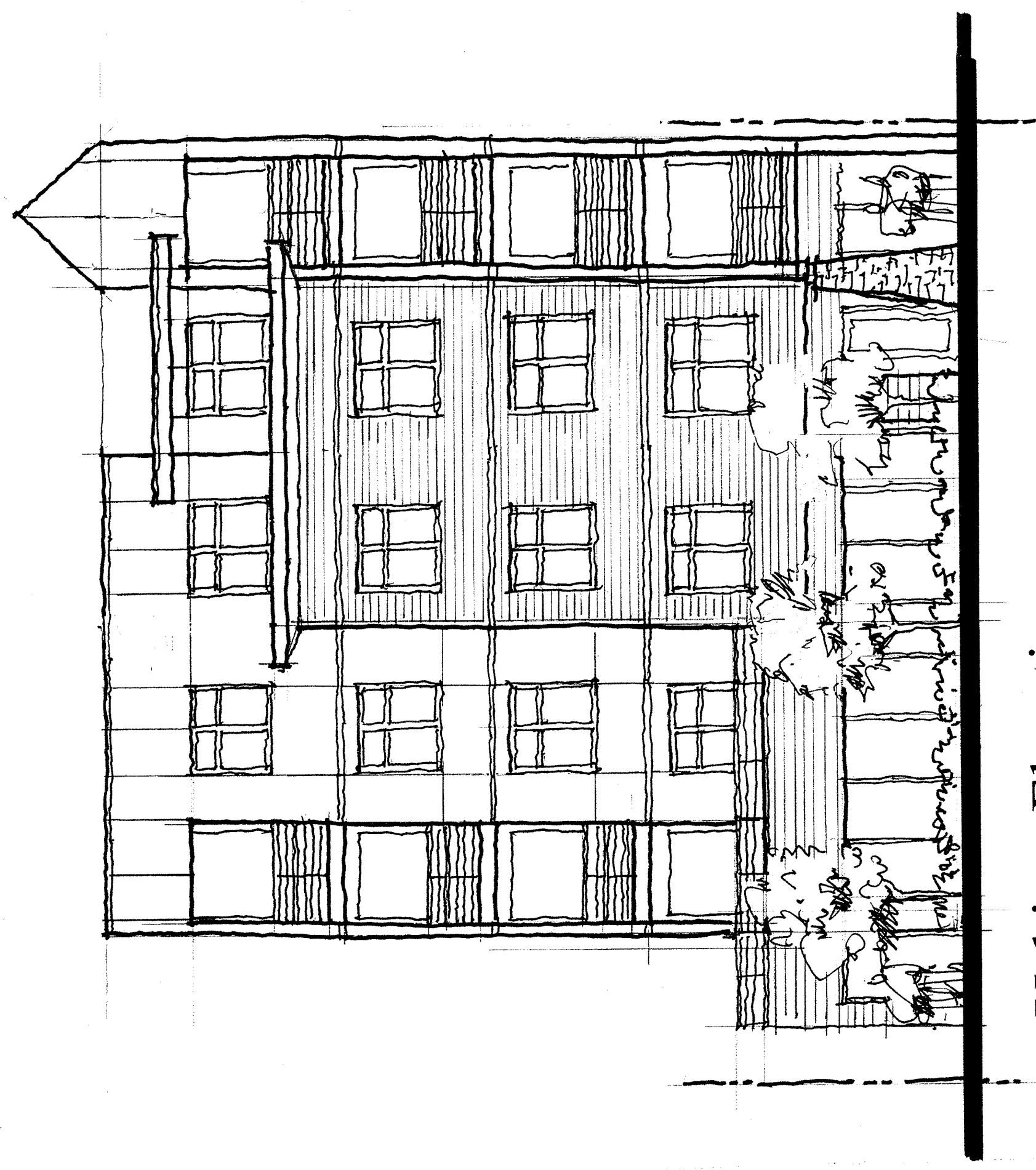
Gross Floor Area: (approximate in square feet)  
 Basement Garage: 7,205  
 1st Floor Garage: 7,020  
 14,275

2nd Floor Office/Residential 6,119  
 3rd Floor Residential 6,762  
 4th Floor Residential 6,762  
 5th Floor Residential 6,762  
 6th Floor Residential 3,393  
 29,798

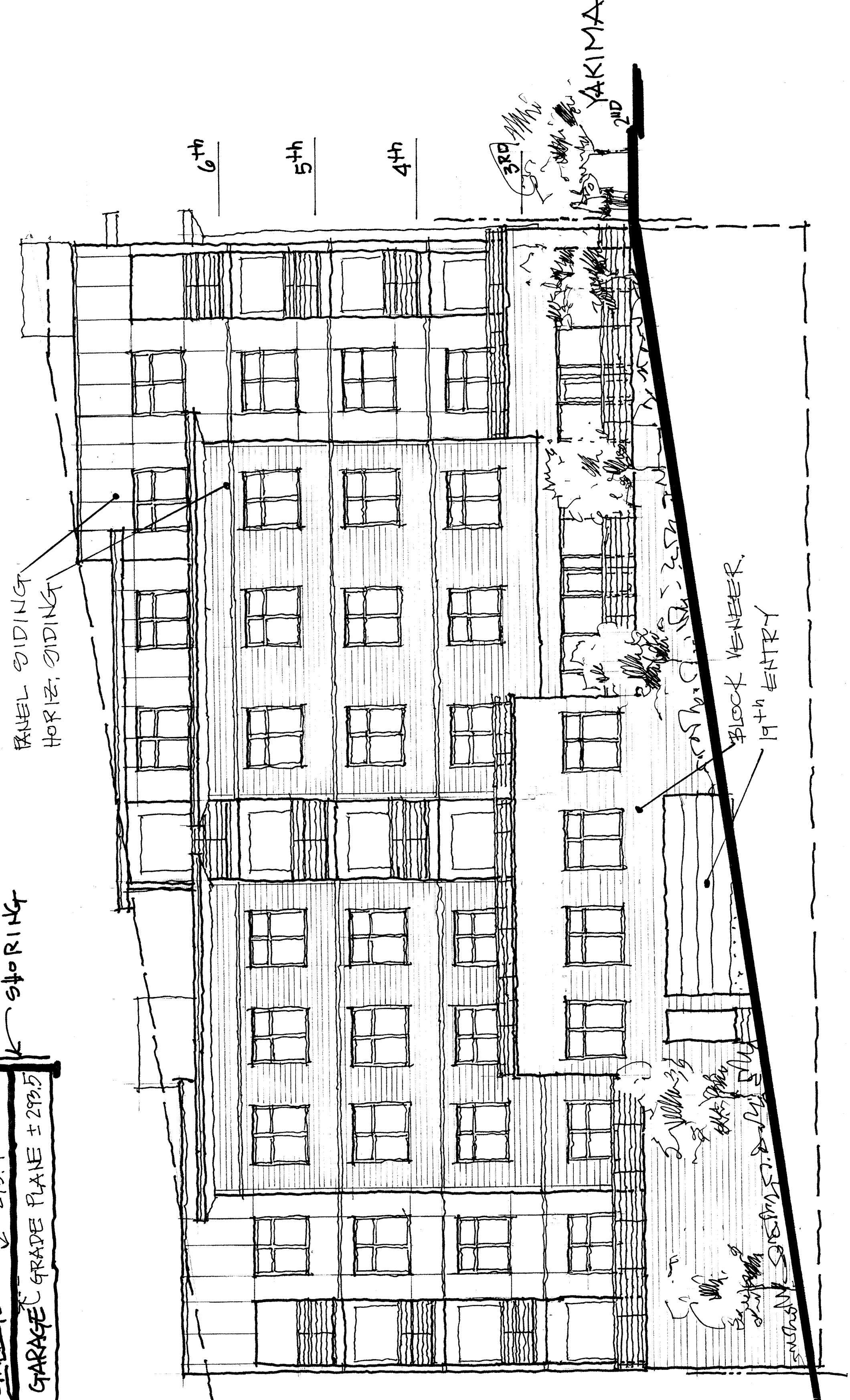
Unit Mix:	Count	Sq. Ft.
A 1 Bedroom	1	601
B Studio	4	1,852
C 2 Bedroom	4	3,852
D 1 Bedroom	1	735
E Studio	4	1,968
F 1 Bedroom	3	2,286
G 2 Bedroom	3	3,072
H 1 Bedroom	4	2,784
I 1 Bedroom	4	3,372
J 1 Bedroom	1	680
	29	21,202

Parking Required: 29 stalls  
 Parking Provided: 1 stall/1 Bedroom or Studio 22  
 2 stalls/2 Bedroom 14  
 Extra 1 37 stalls

Floor Area Ratio:  
 2nd Floor Residential 3,693 Sq.Ft.  
 3rd Floor Residential 6,762  
 4th Floor Residential 6,762  
 5th Floor Residential 6,762  
 6th Floor Residential 3,393  
 27,372 or 3.50



Yakima Elevation



19th elevation

PAUL J. CASEY, AIA  
 4594 REGISTERED ARCHITECT  
 STATE OF WASHINGTON

19th & Yakima Mixed Use Development  
 Tacoma, Washington  
 5521 100th Street SW, Suite A Lakewood, Washington 98499 (253) 584-5207

PROJECT NO. : 02-102  
 DRAWN BY : PJC  
 ISSUE DATE : 6-9-02  
 LATEST REV. :  
 THIS SET :